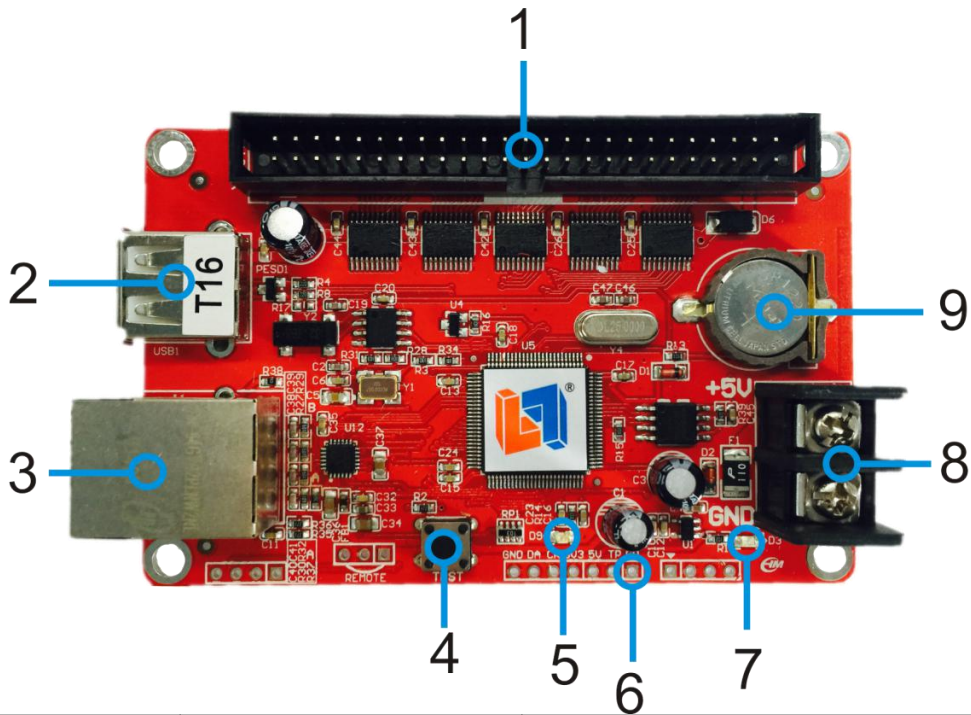


## Specification for T16 LED Display Controllers

| version | date       | Reason |
|---------|------------|--------|
| V2.00   | 2015/08/07 | 创建文档   |

## Hardware:



| Number | Interface Name       | Description   |
|--------|----------------------|---|
| 1      | 50PIN Port           | connect adapter plate   |
| 2      | USB Port             | USB Port  |
| 3      | Ethernet port        | Million ethernet interface                                      |
| 4      | Multifunction button | Can support :<br>1.Test LED panel<br>2.Restore factory settings |
| 5      | Status indicator     | Indicating working state  |
| 6      | Sensor port          | Connect TEMP sensor   |
| 7      | 5V Power indicator   | Indicating power state  |
| 8      | 5V Power Port        | Wide voltage input 3.5V-6V                                      |
| 9      | RTC Button battery   | RTC Power,Voltage 3V  |

## Parameter:

|                      |  |
|----------------------|--|
| <b>Memory</b>        | 2MByte   |
| <b>Adaptation</b>    | Single color,Double color  |
| <b>Pixels</b>        | Single 128K Double64K  |
| <b>Range</b>         | Single :2048*32 2048*64 1024*128 512*256<br>Double:2048*32 1024*64 512*128 256*256 |
| <b>Function</b>      | Multi area display/Multi language version  |
| <b>Program NO.</b>   | Support 128 program,Each program 16 zones  |
| <b>Area type</b>     | Text/Image/Animation/Time/Analog clock/Timer/Temperature/Temperature and humidity  |
| <b>Frame mode</b>    | Program Water frame/Area Water frame   |
| <b>Clock</b>         | Digital clock/Analog clock/Countup/Countdown                                       |
| <b>Communication</b> | USB port and million ethernet interface  |
| <b>Display Port</b>  | 50PIN Port   |
| <b>Sensor</b>        | Temperature Sensor   |
| <b>Brightness</b>    | 16 Level brightness , Automatically adjust the period of time                      |
| <b>Remote</b>        | Support Timing Switch/Software Switch  |
| <b>Voltage</b>       | 3.5V~6V  |
| <b>Max Power</b>     | <1W  |
| <b>Temperature</b>   | -40℃-85℃   |
| <b>Development</b>   | DLL  |
| <b>Software</b>      | LED Player 6.0   |

### Dimensional drawing:

